



LOT 36 UPLANDS DRIVE

**56 UPLANDS DRIVE
MARKDALE**

AURORA II

1896 SQ.FT.

MOVE-IN READY

INCLUDED FEATURES:

- * Premium corner lot backing onto parkland
- * Upgraded Windows & 3pc RI Bath in Basement
- * Basement cold cellar
- * 200 AMP hydro service
- * Rough-in for future central vac system
- * Water softener
- * Gas line for future stove
- * Water line for future fridge
- * Garage door opener with remote and keyless entry
- * Stained hardwood stair and railing
- * 72" Glass shower system in the ensuite w/ upgraded faucets
- * Upgrade interior doors and hardware
- * Hardwood flooring throughout the main floor

Contact us today at 519-986-4471

\$699,900.00



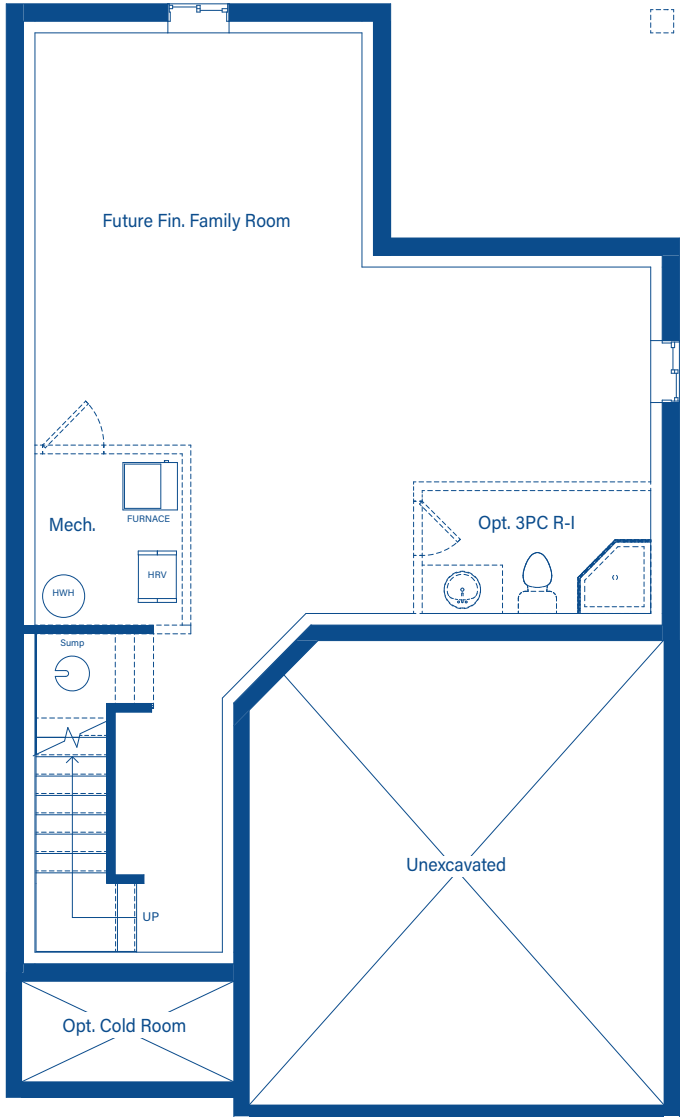
DEVONLEIGH HOMES

WEB: DevonleighHomes.com

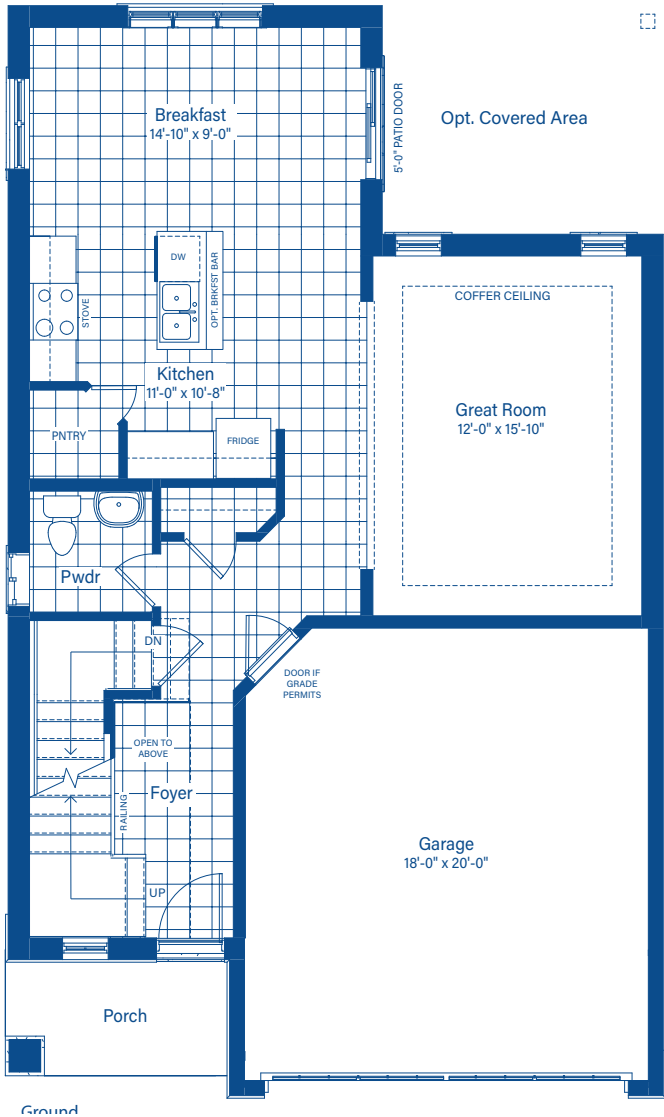
Plans and specifications are subject to change without notice.
All renderings and photographs are artist's concept. E&O.E.

AURORA II

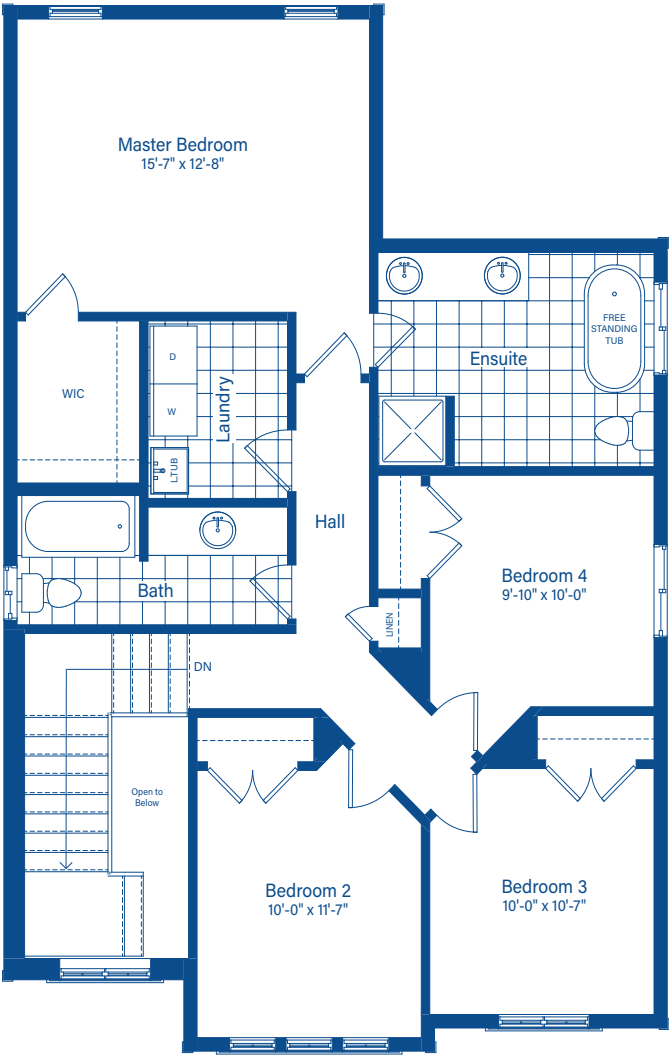
Lot 36 Uplands Drive, Markdale 1896 SQ.FT.



BASEMENT



MAIN FLOOR



2ND FLOOR

